

The logo for Teach Tek, featuring the word "TEACH" in a white sans-serif font and "TEK" in a bold, black sans-serif font inside a white circle. The entire logo is enclosed in a rounded rectangular frame with a multi-colored gradient border (yellow, green, blue, purple).

TEACH **TEK**

BOOK 2023

The background of the entire page is a vibrant, abstract digital composition. It features a dark blue base with glowing, ethereal patterns in shades of purple, pink, and light blue. There are some circular, bubble-like elements and a prominent red, ribbon-like shape that curves across the middle. The overall aesthetic is futuristic and high-tech.

# TEKNOLOGY

2024

Discover Teach Tek's Technology Book: a guide to intuitive and efficient AV solutions for education. We offer a full spectrum of products and services, enhancing classroom interaction and connectivity.

- + Classrooms & Small Spaces
- + Large Venues, Halls & Gyms
- + Outdoor AV & Signage
- + All things Audio-Visual!



# TABLE OF CONTENTS

<b>About Teach Tek</b>	<b>3</b>
<hr/>	
<b>Classroom &amp; Small Displays</b>	<b>4</b>
LCD TVs and interactive Displays	5
LCD Mounting Solutions	10
Projectors	11
<hr/>	
<b>Connected Solutions</b>	<b>14</b>
Wireless Sharing	15
Conferencing	16
Hybrid Learning Kits	17
<hr/>	
<b>Large Venues and Gyms</b>	<b>18</b>
Custom Size LED	20
TEK LED All-In-One	21
Large Venue Projectors & Cages	23
<hr/>	
<b>Outdoor solutions</b>	<b>24</b>
Large Outdoor LED Displays	25
School Signage	26
<hr/>	
<b>Creative Projects</b>	<b>27</b>





## About us Teach Tek

**Our mission is straightforward:** to equip schools with the tools for modern and interactive learning environments. We focus on enhancing collaboration and engagement through our range of products and services. From comprehensive audio-visual installations to power and data solutions, Teach Tek is the all-in-one partner for all your education technology needs.



THE TEK BUS

### The TEK Bus

Interested in our solutions?

Ask us about onsite demonstrations.

The TEK BUS makes it possible for us to bring the technology to you!



Ask us about  
Teach Tek's own  
advanced warranty  
replacements!

the more you read,  
the more you know.  
the more you know,  
the smarter you grow.  
-Dr. Seuss

# Classroom & Small Displays

*We provide customised Audio-Visual experiences in compact learning environments. Our range includes versatile interactive displays, modern projectors, and efficient digital signage, ensuring effective information delivery and engagement.*



# LCD TVS & INTERACTIVE DISPLAYS

Teach Tek specialises in enhancing learning with high-quality LCD and interactive displays. We offer a selection of leading brands such as Philips and Promethean, chosen for their clarity, efficiency, and user-friendly capabilities. All Philips commercial displays support native Vиви as an input on the panel without the need for an additional box, and they are supported in Vиви Central.



**5 YEAR ONSITE WARRANTY\***

## Philips E-Line

Philips top-spec'd interactive display. The 4K anti-glare screen and educational software integration cater to collaborative learning.

65"

75"

86"

- 20-point IR touch
- Top camera input
- Blue light filter
- Integrated Wi-Fi
- Crestron controllable
- Auto timer schedule
- Motion sensor for sleep
- 16/7 operation



**5 YEAR ONSITE WARRANTY\***

## Philips B-Line

Philips B-Line is a versatile TV solution, ideal for educational settings. It offers a commercial-grade experience without the usual retail TV pop-ups, ensuring seamless, distraction-free use.

32"

55"

43"

65"

50"

75"

- Customisable Display
- Cloneable Settings
- Auto Schedule
- Source auto switching
- HDMI Hotplug Detection
- Seamless Connectivity





## About us

# PHILIPS

**Philips partners with Vivi** to keep students engaged with smooth, interruption-free lessons. Vivi's innovative wireless screen sharing technology streamlines lessons, allowing educators to effortlessly cast diverse content onto the big screen. Their unique mirror sharing feature also ensures each student can view the content on their personal devices, making sure no detail is missed.



### Integrated Vivi Solution

Philips displays integrate Vivi solutions, eliminating the need for additional hardware.



### Remote Upgrades

Enjoy the convenience of automatic, remote updates managed by Vivi.



### Vivi Auto Start Feature

Allows educators to begin teaching instantly with one touch, bypassing app navigation.



### Effortless Monitor Control

Control monitors easily through the Vivi app, without the need for additional software.



### Optimised Power and Data Usage

The system reduces the need for additional GPOs, network points, cables, and switches.



### \*5-Year On-Site Warranty

Service technicians will remove, reinstall and reload Vivi (ground-level access only)



# COMMERCIAL DISPLAYS

Philips digital signage transforms school communication. They brighten lobbies, deliver branding in reception areas, and serve as dynamic notice boards in hallways. They're also ideal for displaying menus, highlighting new arrivals, and providing updates on sports teams. All Philips commercial displays support native Vivi as an input on the panel without the need for an additional box, and they are supported in Vivi Central.



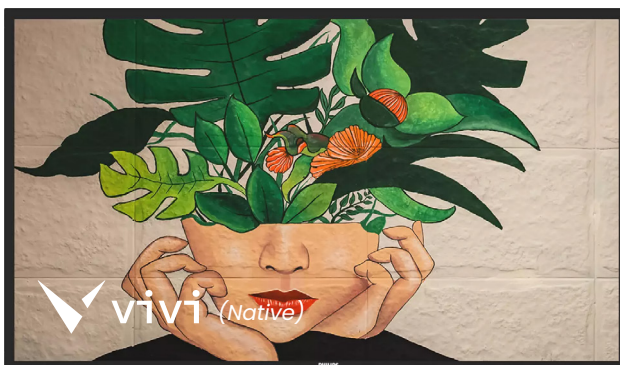
**3 YEAR ONSITE WARRANTY\***

## Philips Q-Line

The Q-Line brings versatility to school comms with professional signage displays. Use with your existing system or add an additional Vivi license and create the full classroom solution.

- 32"
- 43"
- 50"
- 55"
- 65"
- 75"
- 86"

- Powered by Android
- Vivi Integration (optional)
- 400 nit brightness
- Crestron controllable
- Auto timer schedule
- 16/7 operation



**3 YEAR ONSITE WARRANTY\***

## Philips D-Line

Amaze your guests with a smarter, faster, signage display. With integrated WiFi and designed for running Android apps, it's the next evolution in signage solutions.

- 32"
- 43"
- 50"
- 55"
- 65"
- 75"
- 86"
- 98"

- Powered by Android
- Vivi Compatible
- 500 nit brightness
- FailOver (Backup signage)
- Integrated Wi-Fi
- Auto timer schedule
- 24/7 operation



# PROMETHEAN TOUCH DISPLAYS



5 YEAR ONSITE WARRANTY\*

## ActivPanel 9 Premium

Promethean's top-tier interactive panel delivers a robust, seamless, and secure user experience, including quick connection to content and a personalised user experience.

65"

75"

86"

- USB-C (100W of power delivery)
- 4K screen with toughened glass
- Advanced touch and palm recognition
- Personalised roaming user profiles
- Sign in with NFC, ActivSync, app, QR, Google and Microsoft OAUTH.
- Screen recording across all inputs.
- Built-in Microphone and subwoofer



5 YEAR ONSITE WARRANTY\*

## ActivPanel 9

The ActivPanel 9 (Standard) is the entry-level model of the 9 series, offering key innovative features of the 9 Premium while omitting high-end extras for budget-conscious users.

65"

75"

86"

- USB-C with 60W of power delivery
- Toughened glass with advanced touch and basic-palm rejection
- Personalised roaming user profiles
- Sign in with, QR, app, password, Google and Microsoft OAUTH.
- Screen recording across all inputs.
- Front facing speakers.



5 YEAR ONSITE WARRANTY\*

## ActivPanel LX

The LX is a reliable, high-quality solution that offers superior value, ease of use, flexibility, and versatility for any environment. It can be used with whatever technology platform is already in place and can be paired with a Promethean computing module (Google, Windows, or Android).

65"

75"

86"

- 4K display with HDMI 2.0 technology
- Gigabit ethernet ports for optimised network speeds to a connected OPS.
- LCD bonded glass for viewing and writing
- 20-point touch technology with touch differentiation and palm erase.
- Dual front-facing speakers, a full length pen tray, and a wall mount





# About Promethean



**Teach Tek is proud to be an authorised Promethean partner.**

As a global leader in interactive displays for education, with 25+ years of excellence, Promethean offers a comprehensive suite of products, accessories, software, and services to ensure the successful implementation of technology into all types of learning environments. The following is included with every Promethean ActivPanel 9:



**Software:** ActivPanel OS, whiteboard, apps and ActivInspire teaching software



**Updates:** Software updates and feature development based on user feedback



**Promethean Portal:** User-profile customisation, cloud storage connectivity and security



**Promethean App:** Mobile and Desktop App for ActivSync, Screenshare and ActivPanel sign-in



**Promethean Panel Management:** Panel Management for the life of the panel.



**Radix Viso:** 365-day Radix credit. Integrates with panel management for advanced control.



**Learn Promethean:** Access to online courses, user-guides, videos, resources and more



**Support:** Support via website, community forum and local hotline



**Training:** ActivPanel Orientation training (Facilitated by Teach Tek)



**ActivCare:** 5 years onsite warranty (part or panel replacement)



# LCD MOUNTING SOLUTIONS

## (OPTIONAL)

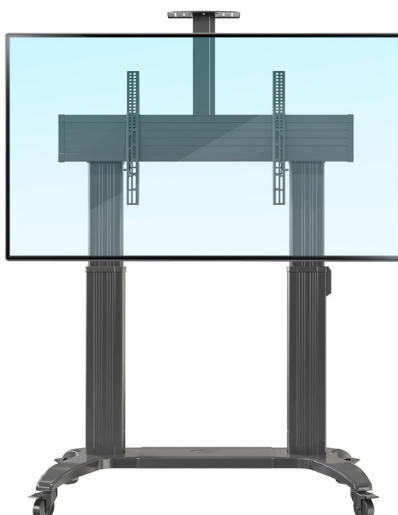
In addition to our standard Standard fixed wall mount (included in all Philips and Promethean offerings) we offer a range of different solutions, including electrical and manual, mobile and wall-mounted, dual screen and tilt-swivel. The options shown below are our recommended solutions for single TV and touch-screen panels in the classroom



### Electric Wall Lift

TW55 Electric Vertical Lift Touch Screen Mount in Black. Allows screens and touch screens to be presented right down to 630mm from the floor to the centre of the screen, providing input access to small students or those bound to wheelchairs or mobility aids.

- One touch electric height adjustment
- Suitable for screens from 40" to 70"
- Manufactured from powder coated steel components for a long service life
- Minimum height to bottom of screen 200mm and maximum 1350mm to centre of screen
- Attached hand held wired remote control
- Load bearing floor mounted legs.



### Electric Trolley Lift

The TW-100 is an Electric Dual Column Lift and Heavy Duty Height Adjustable Mobile Cart. It's designed to offer flexibility and mobility of presentation.

- Motorised height adjustment.
- Smooth rolling braked castors
- Made from rigid aluminium alloy and steel.
- Integrated cable management through columns.
- Designed for 60"-100" flat panel TV
- TV Height adjustment: 1230mm to 1723mm.
- Camera tray and inbuilt control panel.



# PROJECTOR DISPLAYS

In the dynamic landscape of educational technology, classroom projectors remain a versatile and effective solution for visual learning. At Teach Tek, we recognise the unique place projectors hold in education, offering an alternative to traditional displays with their flexible placement and scalable screen size. Our brand of choice, Epson, stands out for its reliability, superior image quality, and cost-effectiveness.



**5 YEAR PROJECTOR WARRANTY**

## Mid-Range Projector

The EB-L Series offers cutting-edge laser technology with high brightness, offering a versatile, high-definition projection solution for a range of environments.

- Laser Source: Superior Quality and Reliability
- Brighter Colors: Enhanced 3LCD Technology
- 7,000 Lumens Brightness: Color and White
- WUXGA, 20,000-Hour Maintenance-Free Laser
- Bright, Compact Design: Versatile Use
- Large, Flexible Display Options
- Optional Wireless Screen Sharing
- Advanced Image Enhancement
- USB Content Playback: PC-Free
- 360° Versatile Installation



**UP TO 3-YEAR PROJECTOR**

## Ultra Short Throw

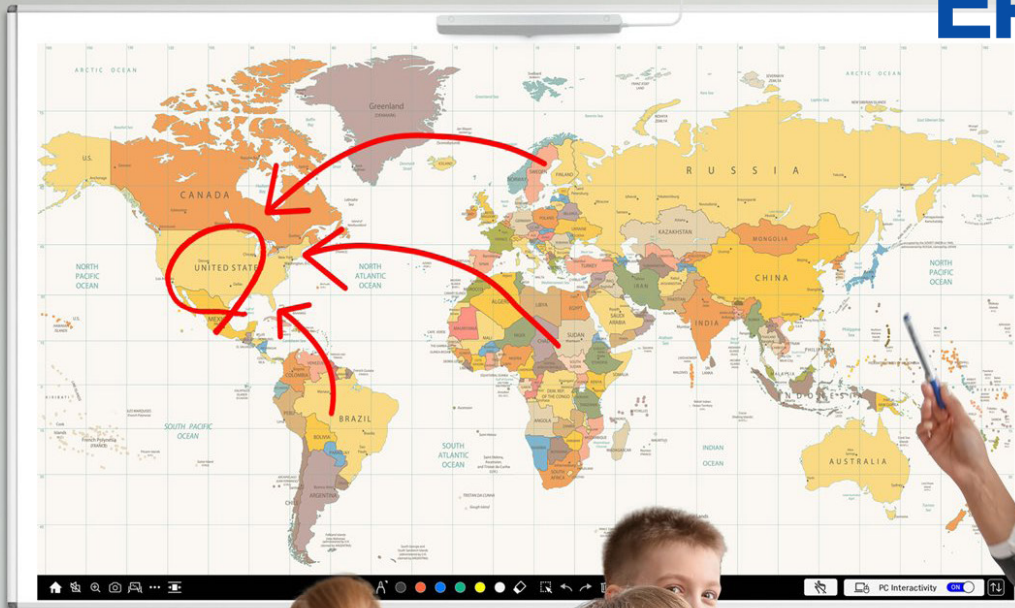
The Epson Ultra Short Throw Projector range transforms classrooms with vibrant, large-scale visuals, enhancing interactive and immersive learning experiences for students.

- Brighter Colors, Reliable Performance
- Lamp-Free, 20K Hour virtually maintenance free Operation
- 1080p for HD Content
- Stunning Color Brightness
- Miracast for Mobile Projection
- 150" Large Image Display
- Flexible Aspect Ratio Support
- Inbuilt 16W Stereo Sound





**EPSON**<sup>®</sup>



# About Epson

Known for their high-quality laser displays, Epson projectors create immersive and engaging learning environments, with seamless integration across devices. Their large, bright displays, user-friendly tools, and OS-agnostic operation ensure all students can access clear and captivating educational content.







# Connected Solutions

*As we navigate through a world increasingly reliant on digital interaction, the importance of seamless connectivity cannot be overstated. This section focuses on innovative solutions that integrate wireless sharing, advanced conferencing systems, and the emerging concept of hybrid learning.*



# WIRELESS SHARING

Seamless sharing, universal compatibility. More than just screen casting, our platform transforms screen sharing into a dynamic teaching tool. Say goodbye to incompatible on-panel apps. Our solution, based on a robust hardware receiver, guarantees compatibility across various displays. This versatile technology is easily transferable between rooms, ensuring seamless integration wherever you go. Featuring products like Vivi, our systems offer direct display integration while supporting third-party applications, providing unparalleled flexibility and ease of use.



## Vivi

Vivi's wireless sharing system offers interactive and efficient teaching tools tailored for education.

- Cross-Platform Screen Sharing: Windows, IOS, Chrome, Android and even Linux
- Campus-Wide Digital Signage and management
- Emergency Evacuation Alerts & Class Messaging
- Clocks, Timers and Student Polls with Emojis,
- Multi-Screen Group Share
- Native Windows Extended Desktop
- Wireless HID Touch Support
- Full-Site Device Management
- Ad-Free Video Playback

## ScreenBeam®

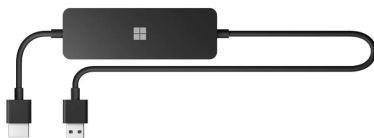


## ScreenBeam

Screenbeam offers a flexible and intuitive solution for 4k wireless presentation and content sharing, ideal for both educational and business settings.

- App-Free Mirroring: Direct device connection with Miracast
- iOS/macOS Integration: Seamless Apple device support.
- Extended Desktop: More display options.
- Interactive Touch: Engaging user experience.
- Central Management: Efficient receiver control.
- Emergency Readiness: Safety alert system.
- HyFlex Classroom Compatible: For hybrid learning.

## Microsoft



## Basic Miracast

Experience effortless screen sharing with Miracast by Microsoft, a built-in feature in Windows 10 and 8.1, perfect for interactive and dynamic educational settings.



# CONFERENCEING SYSTEMS

logitech

Ranging from webcams to premium setups, covering all budgets.



The finer details: Keyboard and mouse for ease of use.

+ Option for multiple cameras and mics, ideal for large spaces.

Robust Windows IoT or user-friendly Android for seamless integration.



**Inspire collaboration. Maximise engagement. Each room has different requirements and needs when it comes to conferencing, BYOD, MTR, Google, you name it we have a solution to cover your needs.**

Premium and quality budget speakers and mic arrays for clear audio capture.

+ 4K Native & AIO Systems: Ultra-HD 4K resolution and efficient All-in-One conferencing units.

BYOD Support for personal devices and adaptable solutions for all spaces.



# HYBRID LEARNING

When it comes to learning in a modern way, why not look to work with your partner schools to outdoors Hybrid learning spaces. Our kits have been developed to provide the educators with a high tech system that feels like they are just using their normal work station. Cameras, mic arrays and integrated lecterns, these systems have it all. Designed for even the most difficult rooms, it only required Cat6 cables to be installed.



Teach Tek's Hybrid Learning kit in action.





# Large Venues, Gyms & Halls

*For large venue spaces in schools, simplicity and functionality are paramount. Teach Tek excels in creating environments that are easy to use and manage, especially for those hiring the hall. From sound systems to projections, our offerings are tailored to meet the diverse needs of large spaces.*





### Advanced Audio Systems

Modern audio with enhanced speech clarity and minimal sound reflection, paired with reliable, zero dropout wireless microphones.



### Laser Projection & LED Screens

Brilliant and bright Projector and custom LED displays for well-lit venues and expansive areas.



### Custom Cages

Specially designed lightweight protective cages, tailored to ensure the safety and security of various types of equipment.



### Seamless Connectivity

Easy integration with PCs, and Bluetooth devices, ensuring smooth operation across a range of different devices.



### Smart and Adaptable Layouts

Flexible design options to accommodate different space requirements, including efficient wall mount racking for easy access to hardware.

s off to teach



World Teachers'  
27 October 2023  
Gym  
12:00 PM - 5:00 PM



# CUSTOM SIZE LED



POWERED BY



Teach Tek proudly presents our custom LED solutions, powered by industry leader Aurora Signage. These innovative LED displays are designed to transform education by offering dynamic multimedia content delivery in classrooms, auditoriums, and sports arenas. Aurora Signage's expertise in LED cabinet design and power management, coupled with our collaboration, ensures advanced, user-friendly, and reliable LED technology for educational institutions nationwide.

**Engaging Learning Environment:** Elevate education with dynamic visuals that captivate and enhance the student experience.

**Cutting-Edge Technology:** Benefit from Aurora's advanced LED cabinet design and power management for reliable performance.

**User-Friendly:** Seamlessly incorporate our LED solutions into existing teaching methods, making it effortless for educators.

**Quality Assurance:** Trust in the partnership of Teach Tek and Aurora for long-lasting and dependable LED solutions.

**High-Impact Protection:** Choose the option for enhanced durability and safety with our AOB impact-resistant transparent covering.

**Customisation:** Tailor LED solutions to your institution's unique needs, ensuring a perfect fit for your educational environment.



# ALL-IN-ONE LED



## TEK-LED ALL IN ONE LED

The Tek LED I-TV is an Australian-owned Android LED display that is ideal for large educational environments. It offers a range of features including a built-in control system, USB-C and HDMI inputs, and the ability to wirelessly present content from different devices. With its user-friendly interface and intuitive on-screen menu, this display is easy to operate without the need for complex third-party software.



Ideal for various venues: conference rooms, halls, boardrooms, auditoriums, libraries, classrooms.



Integrated design and internal integrated system, no need for external devices, user-friendly.



Versatile installation: wall-mount or trolley stand, straightforward, no complex supports.



Onboard Android providing control and wireless casting of various devices.



Panel with flash memory for calibration data, enables automatic adjustment settings.



Front access design for simple maintenance of panels, power supplies, and components.



One-button startup, easy operation, perfect for beginners without prior experience.

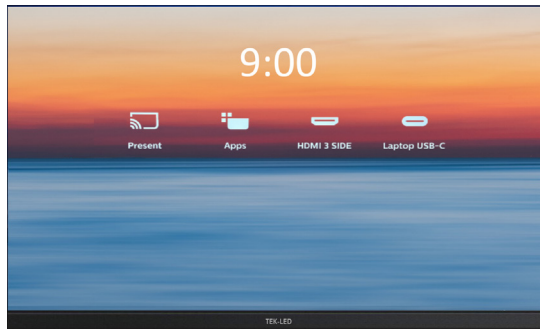


Aspect ratios range from 16:9 to 32:9, including 21:9 format ideal for Microsoft Teams Rooms.



# ALL-IN-ONE LED

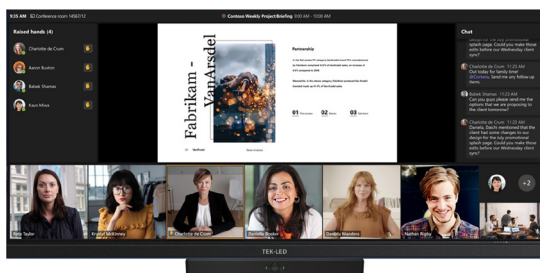
## TEK-LED I-TV (16:9)



The 16:9 format a standard ratio perfect for various different spaces and for displaying different types of content.

16:9 Displays	Size	Pixel Pitch	Display Price	Install Price
I-TV12013-TEK	120"	1.3mm	POA	POA
I-TV13815-TEK	138"	1.5mm	POA	POA
I-TV15017-TEK	150"	1.7mm	POA	POA
I-TV16519-TEK	165"	1.9mm	POA	POA
I-TV1802-TEK	180"	2mm	POA	POA

## TEK-LED I-TV (21:9)



The 21:9 format is perfectly suited for Microsoft Teams Rooms, large meeting areas, and hybrid learning environments. This display provides an immersive widescreen experience that enhances presentations and collaborative learning

21:9 Displays	Size	Pixel Pitch	Display Price	Install Price
I-TV13212-TEK	132"	1.2mm	POA	POA
I-TV18115-TEK	181"	1.5mm	POA	POA
I-TV20919-TEK	209"	1.9mm	POA	POA

## MOBILE TROLLEY



Accessory	Compatible Sizes	Price
I-TV-TROLLEY	120"-165"	POA

# VENUE PROJECTORS

Epson laser projectors excel in large venues with their bright, high-quality images and durable performance. Ideal for auditoriums, halls, lecture theatres and gyms, they offer clear, impactful visuals for school events and assemblies, ensuring reliability with low maintenance.

**EPSON®**  
EXCEED YOUR VISION



## Laser Projector

Epson's large-venue projectors combine a laser light source and 3LCD technology for powerful, uncompromising images.

- Brightness Range from 7000 to 20,000 Lumens
- Superior WUXGA & 4K Enhancement Display.
- 20,000-hour Solid-state Laser Source.
- Comprehensive Connectivity: HDBaseT, HDMI®, DVI-D, VGA.
- Epson® 4K Enhancement Technology.
- Optional 4K-Ready Interchangeable Lenses.
- Web-based Remote Projector Management.
- Full 360-degree Professional Installation.



## Custom Designed Cages

Expertly designed, custom-made projector cages: durable, secure, and stylishly integrated for optimal protection and functionality





# Outdoor Solutions

*For outdoor settings, Teach Tek's solutions are designed for resilience. Our weatherproof LED displays and audio systems guarantee clarity and vividness under any conditions, ideal for school and sports signage. Specifically crafted for the outdoors, these systems offer durable performance, ensuring your messages resonate.*



# CUSTOM WEATHERPROOF LED



POWERED BY



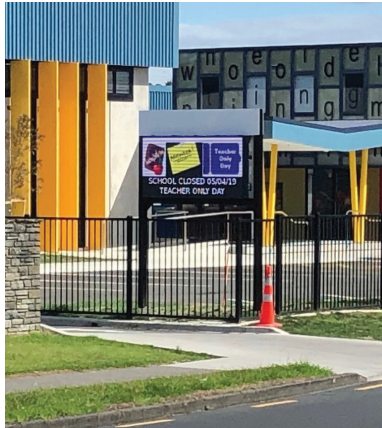
Aurora LED Signage

Teach Tek elevates outdoor spaces with custom LED displays perfect for schools, amphitheatres, and sporting arenas. Our versatile range includes large screens, sport signs, and scoreboards, designed to withstand all weather conditions. Give us a call to discover stunning outdoor visuals with Aurora's durable and dynamic LED solutions.





# PREBUILT SIGNAGE KITS



POWERED BY



Teach Tek and Aurora Signage LEDs simplify the process of ordering and installing outdoor LED signs. Choose from ready-to-use, pre-fabricated structures – just install footings and select a sign to suit your needs. Our range includes easy-to-use standard single-sided displays and custom screens in various resolutions for any budget. While our standard designs ensure quick, cost-effective solutions, we also offer customisation.

**Pre-Built Modular Kits:** Designed for easy transport and installation, reducing the need for specialty transport or cranes.

**Seamless Delivery, Installation & training:** Modular design simplifies delivery and installation, eliminating external contractor needs. Includes comprehensive in-person and online training.

**Cloud Content Management:** Supports cloud apps like Fusion Signage and Vivi via an Android OS for effective content management.

**Weather-Resistant Design:** Structures feature enclosed tops and rears, offering weather protection and branding opportunities.

**5-Year Warranty & Australian Support:** Durable hardware suited for Australia's climate, backed by a local manufacturer with a 5-year warranty.

**Cost-Effective Pricing:** Standard-based pricing model considers factors like location and height, aiming to reduce costs, great for regional schools.





# Got an exciting idea for a space? Get in touch!

*We're all about technology and love thinking outside the box. Our portfolio includes unique projects like podcast rooms, green/media rooms, and giant curved LED walls. We pride ourselves on our versatility and creativity - if you can dream it, we can make it happen!*



# THE TEK POD

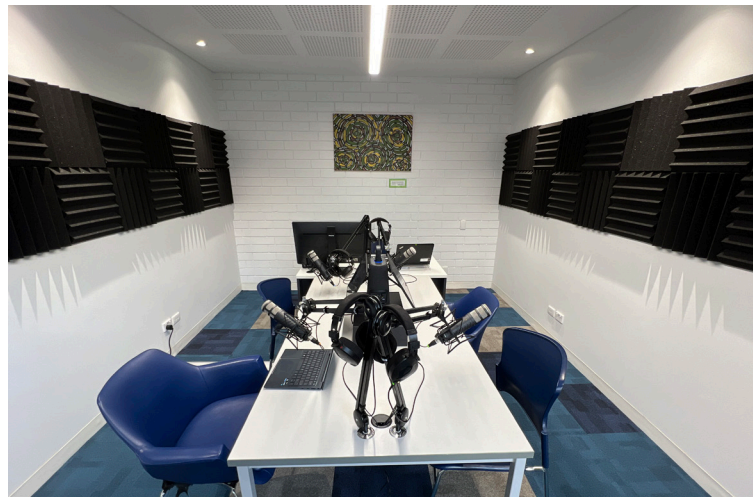
Introducing the Teach Tek - Tek Pods - the ultimate pre-packaged podcast studio kits designed to revolutionize the way students and education staff engage with content creation and live streaming. These Tek Pods have been meticulously crafted to offer a seamless and user-friendly experience, allowing users to effortlessly connect and go live with just a USB connection to their laptop.

The versatility of the Tek Pods is unparalleled, enabling users to utilise straightforward software like OBS or seamlessly connect to Microsoft Teams meetings for a truly unique experience. Whether you're capturing content or streaming live, the Tek Pods provide an immersive and engaging platform for both students and educators alike.

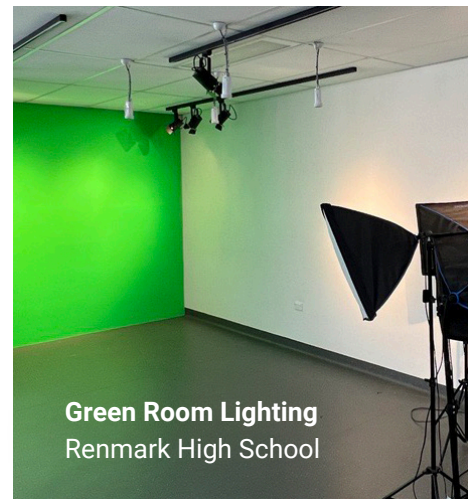
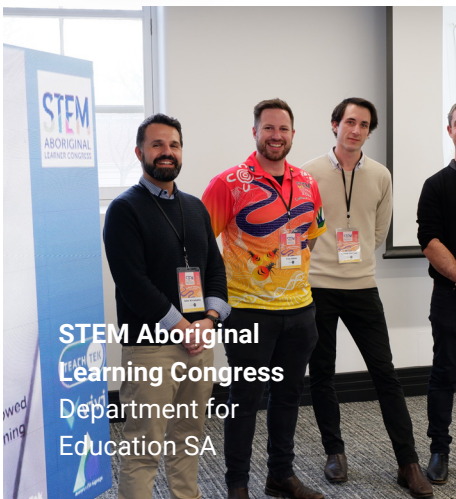
The Tek Pods come in two variants: Audio-only and the advanced version that includes a center table 360 Camera. The 360 Camera introduces a new dimension to content creation by capturing a panoramic view of the entire room. This feature supports custom layouts, allowing you to showcase an all-encompassing view or focus on individual participants with up to 4 people in a single recording.

Our Tek Pods are comprehensive kits that include everything you need to set up and operate efficiently. The installation process is a breeze, thanks to our skilled technical delivery team. Additionally, each kit comes with a wall panelling kit designed to enhance audio quality in the room, ensuring that your recordings are crystal clear and professional.

Upgrade your educational content creation and live streaming experience with a Tek Pod – the all-in-one solution that combines simplicity, innovation, and top-notch audiovisual capabilities. Engage your audience like never before with these user-friendly, pre-packaged podcast studio kits that bring education and technology seamlessly together.









TEACH **TEK**

*Follow  
our creative  
projects...*



All content within this catalogue, including product specifications, pricing, and warranty information, is provided for general information purposes only and is subject to change without notice. Teach Tek makes no warranties regarding the completeness or accuracy of the information. For the most up-to-date information, please refer to the product manufacturers' websites. Teach Tek is not liable for any errors or omissions, or for any actions taken based on the information provided in this catalogue. Trademarks and brand names mentioned are the property of their respective owners. All images and brand logos within this catalogue are the property of their respective owners and are used for illustrative purposes only.